

Clinical characteristics and outcomes of IgD myeloma: experience across UK national trials

Item Type	Journal article
Authors	Agbuduwe, Charles;Iqbal, Gulnaz;Cairns, David;Menzies, Tom;Dunn, Janet;Gregory, Walter;Kaiser, Martin;Owen, Roger;Pawlyn, Charlotte;Child, J. Anthony;Davies, Faith;Morgan, Gareth J.;Jackson, Graham H.;Drayson, Mark;Basu, Supratik
Citation	Agbuduwe, C., Iqbal, G., Cairns, D.A. et al. (2022) Clinical Characteristics and Outcomes of IgD Myeloma: Experience across UK National Trials. <i>Blood Advances</i> , 6 (17). pp. 5113-5123.
DOI	10.1182/bloodadvances.2022007608
Publisher	American Society of Hematology
Journal	Blood Advances
Download date	2025-04-23 12:15:21
License	https://creativecommons.org/licenses/by-nc-nd/4.0/
Link to Item	http://hdl.handle.net/2436/625127

Clinical characteristics and outcomes of IgD myeloma: experience across UK national trials

Charles Agbuduwe,^{1,2} Gulnaz Iqbal,³ David Cairns,⁴ Tom Menzies,⁴ Janet Dunn,³ Walter Gregory,⁴ Martin Kaiser,^{5,6} Roger Owen,⁷ Charlotte Pawlyn,⁵ J. Anthony Child,⁴ Faith Davies,⁸ Gareth J. Morgan,⁸ Graham H. Jackson,⁹ Mark T. Drayson,^{10,11} and Supratik Basu^{12,13}

¹UCL Cancer Institute, London, United Kingdom; ²UCL Great Ormond Street Institute of Child Health, London, United Kingdom; ³Warwick Clinical Trials Unit, University of Warwick, Coventry, United Kingdom; ⁴Leeds Cancer Research UK Clinical Trials Unit, University of Leeds, Leeds, United Kingdom; ⁵The Institute of Cancer Research, London, United Kingdom; ⁶The Haemato-oncology Unit, The Royal Marsden Hospital, London, United Kingdom; ⁷Department of Clinical Haematology, St James's University Hospital, The Leeds Teaching Hospitals NHS Trust, Leeds, United Kingdom; ⁸Perlmutter Cancer Center, NYU Langone Health, New York, NY; ⁹Department of Haematology, Freeman Hospital, The Newcastle Upon Tyne Hospitals NHS Foundation Trust, Newcastle Upon Tyne, United Kingdom; ¹⁰Institute of Immunology and Immunotherapy, University of Birmingham, Birmingham, United Kingdom; ¹¹Clinical Immunology Department, University Hospitals Birmingham NHS Foundation Trust, Birmingham, United Kingdom; ¹²Department of Haematology, New Cross Hospital, The Royal Wolverhampton NHS Trust, Wolverhampton, United Kingdom; and ¹³Faculty of Science and Engineering, University of Wolverhampton, Wolverhampton, United Kingdom

Key Points

- IgD myeloma was historically associated with worse outcomes, but we now report a standard cytogenetic risk profile and survival outcomes.
- Improved IgD myeloma survival is due to earlier diagnosis, improved supportive care, and response to novel antimyeloma therapies.

Immunoglobulin D (IgD) myeloma is a subtype often considered to have adverse features and inferior survival, but there is a paucity of data from large clinical studies. We compare the clinical characteristics and outcomes of patients with IgD myeloma from UK phase 3 myeloma trials analyzed in 2 groups: old (1980-2002) and recent (2002-2016) clinical trials, based on the time of adoption of novel myeloma therapies. Patients with IgD myeloma comprised 44 of 2789 (1.6%) and 70 of 5773 (1.2%) of the old and recent trials, respectively. Overall, IgD myeloma was associated with male predominance, low-level paraproteinemia (<10g/L), and λ light chain preference. The frequency of ultra-high-risk cytogenetics was similar in IgD myeloma compared with other subtypes (4.3% vs 5.3%, $P > .99$). Despite the old trial series being a younger group (median age: 59 vs 63 years, $P = .015$), there was a higher frequency of bone lesions, advanced stage at diagnosis, worse performance status, and severe renal impairment compared with the recent trials. Furthermore, the early mortality rate was significantly higher for the old trial series (20% vs 4%, $P = .01$). The overall response rate following induction therapy was significantly higher in the recent trials (89% vs 43%, $P < .0001$), and this was consistent with improved median overall survival (48 months; 95% confidence interval [CI] 35-67 months vs 22 months; 95% CI, 16-29 months). Survival outcomes for IgD myeloma have significantly improved and are now comparable to other myeloma types because of earlier diagnosis, novel therapies, and improved supportive care. This trial was registered at clinicaltrials.gov as # NCT01554852.

Introduction

Multiple myeloma, one of the leading causes of hematologic cancer-related morbidity and mortality, is characterized by an accumulation of monoclonal plasma cells in the bone marrow and usually a detectable monoclonal immunoglobulin (paraprotein or M-protein) in the serum.^{1,2} In contrast to the more common immunoglobulin G (IgG), IgA, and light chain only (LCO) myeloma subtypes, the paraprotein

Submitted 1 April 2022; accepted 22 June 2022; prepublished online on *Blood Advances* First Edition 5 July 2022; final version published online 1 September 2022. DOI 10.1182/bloodadvances.2022007608.

Contact the corresponding author for data sharing at c.agbuduwe@ucl.ac.uk.

The full-text version of this article contains a data supplement.

© 2022 by The American Society of Hematology. Licensed under Creative Commons Attribution-NonCommercial-NoDerivatives 4.0 International (CC BY-NC-ND 4.0), permitting only noncommercial, nonderivative use with attribution. All other rights reserved.

secreted is IgD in less than 2% of cases.^{3,4} IgD myeloma is biologically distinct from the common types of myeloma as it arises in a B cell before immunoglobulin class switching and as such may have a different clinical behavior. IgD myeloma has been described to be associated with a relatively young age at presentation, higher incidence of extramedullary involvement, osteolytic lesions, λ light chain predilection, renal failure, and advanced disease at diagnosis.^{5,6} Prior to the development of more sensitive diagnostic techniques such as immunofixation electrophoresis and the serum free light chain assay,⁷ the diagnosis of IgD myeloma was more likely to be missed because of the subtle M protein spike on conventional serum electrophoresis.⁸ Historically, IgD myeloma has been thought to be associated with a poor prognosis, but some recent studies have suggested comparable survival rates with other subtypes.^{9,10} As IgD myeloma is rare, the evidence base has been mostly limited to few small case series or other retrospective studies.

Over the last 2 decades, the management of myeloma has been transformed by the introduction of high-dose therapy with stem cell rescue, novel agents such as proteasome inhibitors, immunomodulatory agents (IMiDs), and monoclonal antibody therapies resulting in improved survival.¹¹ Furthermore, improvements in supportive care may have also contributed to better outcomes.

The aims of this study were to identify the unique features of IgD myeloma in a large series of patients with myeloma and to compare outcomes between UK Medical Research Council (MRC) and National Cancer Research Institute (NCRI) myeloma clinical trials conducted before and after the introduction of novel therapies to determine their impact on IgD myeloma survival.

Patients and methods

Patient data

Patients with myeloma enrolled in the MRC UK myelomatosis IV, V, VI, VIII, IX, and XI clinical trials were considered for this study. For the purpose of this comparative analysis, 2 series were established: an “old trials” series comprising patients recruited in Myeloma IV, V, VI, and VIII trials, before the introduction of novel myeloma therapies, and the “recent trials” series, which included patients from Myeloma IX and XI. The Myeloma VII trial was not included because patients were randomized to receive intensive chemotherapy and stem cell rescue.^{12,13}

In the old trials conducted between 1980 and 2002, patients were randomly assigned to receive either standard dose melphalan-based chemotherapy or melphalan-based conventional dose combination chemotherapy as exemplified by doxorubicin, carmustine, cyclophosphamide, and melphalan (ABCM). Details of these trials have previously been published.^{12,13}

The two most recent trials, Myeloma IX and XI, accrued trial participants from 2003 to 2016. Myeloma IX was a multicenter, randomized, open-label, phase 3, and factorial design clinical trial conducted in the United Kingdom (International Standard Randomized Controlled Trial 68454111). The trial protocol details for Myeloma IX have been published previously.^{14,15} In summary, newly diagnosed patients aged 18 years or older with symptomatic multiple myeloma were allocated to either an intensive or nonintensive pathway. Details of the randomization strategy and treatment arms are summarized in supplemental Figure 1a-b. For the intensive

pathway, oral cyclophosphamide, thalidomide, and dexamethasone was compared with infusional cyclophosphamide, vincristine, doxorubicin, and dexamethasone in patients with newly diagnosed multiple myeloma. For the nonintensive pathway, patients were randomized to either melphalan plus prednisolone or oral cyclophosphamide, thalidomide, and dexamethasone with a reduced dose of dexamethasone and lower starting dose of thalidomide. The exclusion criteria included pregnancy, asymptomatic myeloma, solitary bone or extramedullary plasmacytoma, previous or concurrent active malignancies, and presence of severe acute kidney injury unresponsive to up to 72 hours of rehydration, characterized by a serum or plasma creatinine $> 500 \mu\text{mol/L}$, a urine output less than 400 mL/day, or a requirement for dialysis.

The Myeloma XI trial (International Standard Randomized Controlled Trial 49407852) was a phase 3, randomized, multicenter, parallel group design, open-label trial comparing thalidomide, lenalidomide, carfilzomib, and bortezomib combinations and of lenalidomide (\pm vorinostat) as maintenance treatment in newly diagnosed patients with symptomatic myeloma 18 years and older.^{16,17} A summary of the randomization and treatment arms are shown in supplemental Figure 2a-b. The exclusion criteria were similar to those for the Myeloma IX trial.

Baseline clinical and biochemical characteristics were recorded for all patients at enrollment. Serum creatinine, β -2 microglobulin, paraprotein type and levels, and urine creatinine and light chain levels were measured by a central laboratory in Birmingham, UK. Participating centers provided clinical details, information on skeletal disease-related events, full blood count, serum albumin and urea, and plasma cell infiltration of bone marrow. Translocations t(4;14), t(14;16), and t(14;20) together with the copy number abnormalities del(17p), gain/amp(1q) have all been associated with adverse outcomes, and the presence of more than 1 adverse lesion is associated with even worse prognosis.¹⁸⁻²⁰ Three cytogenetic risk groups were defined based on the number of adverse cytogenetic abnormalities identified at recruitment: ultra high risk (2 or more), high risk (1), and standard risk (0). Disease response and progression were defined according to trial protocol criteria, and a final report to ascertain the cause of death and a summary of the clinical course was recorded in the event of a death.

All trial protocols were approved by a multicenter research ethics committee and the relevant local ethics committees and institutional review boards. All patients gave written informed consent in accordance with the Declaration of Helsinki.

Differences in patient characteristics by paraprotein group were investigated using Pearson's χ^2 or Fisher's exact tests. Overall survival (OS) was defined as the time between date of entry to either date of death or date last seen. Survival curves were constructed using the Kaplan-Meier method, and the log-rank test was used to assess differences between paraprotein class groups. Progression-free interval was calculated from date of recruitment to either the date of progression or censored at the date of death in patients who died progression free or censored at the date last seen for patients alive without progression. The date of data cutoff was 26 November 2021. Statistical analyses of the MRC trials were performed using SAS statistical software (SAS Institute, SAS Circle, Cary, NC).

Results

Baseline patient characteristics

Forty-four patients with IgD myeloma were identified from the older Myeloma trials, accounting for approximately 2% of the 2789 total myeloma cases with an identifiable paraprotein (supplemental Table 1.1). The most common paraprotein type was IgG (56%), followed by IgA (26%) and LCO (12%). The median age of patients with IgD myeloma was 59 years (Figure 1), and 20% were 65 years or older at the time of diagnosis (Table 1). In this series, most patients with IgD myeloma (61%) had a performance status of 3 or more, and this was comparable to light chain only myeloma (60%). IgD and LCO myeloma were also similar in rates of elevated serum β 2-microglobulin levels. Significant renal impairment, as indicated by elevated serum creatinine and urea, were highest in LCO and IgD myeloma but more marked for the former (supplemental Table 1.2). Severe anemia (<7.5 g/dL) was most frequently observed in patients with IgD myeloma, perhaps reflecting higher bone marrow involvement as half of these patients had bone marrow plasma cells greater than 50%. Hypercalcemia was more common in IgA myeloma (45%). There were, however, fewer lytic bone lesions in IgA myeloma compared with IgD and LCO myeloma, which had the highest rates (supplemental Table 1.2). There was no significant difference in bone pain and fractures across all groups.

Seventy patients with IgD myeloma were recruited into the recent trials accounting for 1.2% of the 5773 total. As observed in the old trials, rates of severe renal impairment were higher in IgD and LCO myeloma subgroups in the recent trials (Figure 1; supplemental Tables 1.2 and 1.3), but this was considerably less compared with the old trials. Both IgD myeloma series were similar in λ light chain preference, higher male prevalence, and low-level paraproteinemia, but the old trials series had significantly worse performance status, advanced International Staging System (ISS) stage, higher serum β 2-microglobulin levels, severe renal impairment, and more frequent lytic lesions at diagnosis despite the recent trial series being older (median age, 59 vs 63 years; $P = .015$; Table 1; Figure 1). In the recent trials, 73% of patients with IgD myeloma were allocated to the intensive arms.

Patients with IgD myeloma in the recent trials had a similar distribution of the cytogenetic risk groups compared with other myeloma subtypes (Figure 2A), with 3 (4.3%) of these patients identified as ultra-high risk at diagnosis. There was an overrepresentation of ultra-high risk cytogenetics in the IgA myeloma group compared with the other subtypes (8.4% vs 5.3%, $P < .0001$; supplemental Table 2). The t11,14 chromosomal rearrangement was assessed at diagnosis in 28 patients with IgD myeloma, and this cytogenetic abnormality was present in 6 (21%) compared with 95 (11%) of 838 patients with IgG and 207 (15%) of 1339 patients with non-IgD myeloma (supplemental Tables 5 and 6).

Clinical responses after induction therapy

Comparison of induction response rates among patients with IgD myeloma between the old and recent clinical trial series showed significant improvements in overall response rates (43% vs 89%, $P < .0001$; Figure 2B). There was a similar trend toward deeper remissions in the participants with IgD myeloma in the recent trials: complete response rate was 40% vs 27% ($P = .23$; supplemental Table 4).

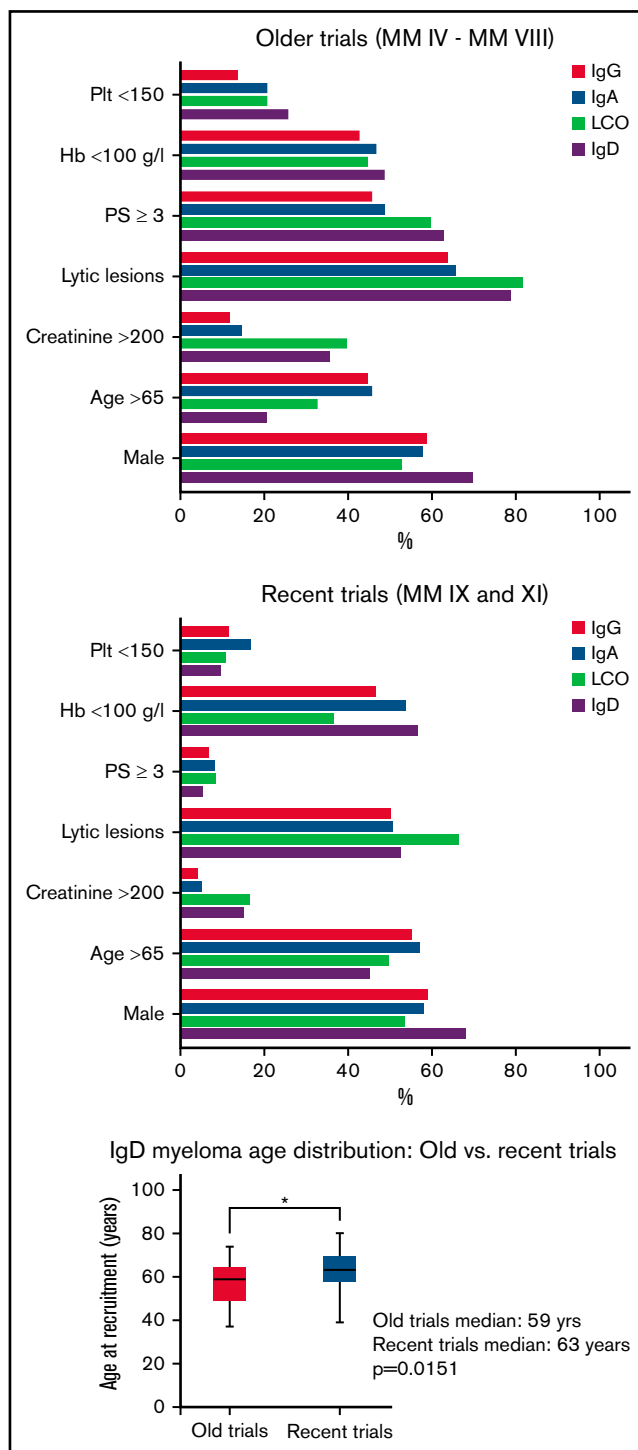


Figure 1. Comparison of baseline patient characteristics for the myeloma subsets across UK MRC/NCRI clinical trials. Plt, platelet count; Hb, hemoglobin concentration; PS, performance status; LCO, light chain only myeloma. The box and whisker plot compares the ages of patients with IgD myeloma in the respective trials. Box indicates median and interquartile range; whiskers indicate range.

Survival outcomes

In the old trials, patients with IgD myeloma had the shortest median OS of 22 months (95% confidence interval [CI]: 16-29 months),

Table 1. Baseline characteristics of patients with IgD myeloma

Characteristic	Grouping	Old trials(MM IV, V VI, and VIII), nN = 44 n (%)	Recent trials(MM IX and MM XI), N = 70 n (%)	P
Age	≤65 y	35 (80)	38 (54)	.0088
	>65 y	9 (20)	32 (46)	
Sex	Male	31 (70)	48 (69)	.99
	Female	13 (30)	22 (31)	
Serum creatinine (μmol/L)	<130	22 (50)	48 (68)	.04
	130-200	6 (14)	11 (16)	
	>200	16 (36)	11 (16)	
	Missing	0 (0)	0 (0)	
Serum β 2 microglobulin (mg/L)	<3.5	3 (7)	16 (23)	.0044
	3.5-5.5	7 (16)	15 (21)	
	>5.5	33 (75)	30 (43)	
	Missing	1 (2)	9 (13)	
ISS stage	Stage I	2 (4.5)	15 (21)	.0045
	Stage II	7 (16)	15 (21)	
	Stage III	33 (75)	30 (43)	
	Missing	2 (4.5)	10 (14)	
Performance status	0-2	15 (34)	64 (91)	<.0001
	3-4	27 (61)	4 (6)	
	Missing	2 (5)	2 (3)	
Lytic lesions	Present	34 (77)	37 (53)	.03
	Absent	7 (16)	21 (30)	
	Not known/missing	3 (7)	12 (17)	
Serum calcium (mmol/L)	≤2.6	20 (45)	54 (77)	<.0001
	>2.6	10 (23)	16 (23)	
	Missing	14 (32)	0 (0)	
Hemoglobin (g/L)	<100	20 (45)	39 (56)	.07
	≥100	21 (48)	31 (44)	
	Missing	3 (7)	0 (0)	
Platelet count (×10 ⁹ /L)	<150	10 (23)	7 (10)	.0016
	≥150	29 (66)	63 (90)	
	Missing	5 (11)	0 (0)	
IgD serum paraprotein quantification (g/L)	<10	24 (55)	36 (51)	.9338
	≥10	14 (32)	23 (33)	
	Missing	6 (13)	11 (16)	
Light chain type	λ	29 (66)	43 (61)	.3944
	κ	14 (32)	21 (30)	
	Missing	1 (2)	6 (9)	
Bone marrow plasma cell (%)	<20	6 (14)	11 (16)	.26
	20-50	9 (20)	25 (36)	
	>50	15 (34)	20 (28)	
	Missing	14 (32)	14 (20)	

and this was similar for LCO myeloma (median, 23 months; 95% CI: 18-27 months; Figure 3A). The longest median OS was observed in patients with IgG myeloma (median: 31 months; 95% CI: 29-33 months), whereas that for IgA myeloma was 28 months (95% CI: 26-31 months). Similarly, the median progression-free

survival (PFS) was longest for IgG myeloma (21 months; 95% CI: 20-22) and shortest for IgD myeloma (16 months; 95% CI, 13-20; $P < .0001$; Figure 3B). A significantly higher early death rate, within 100 days of trial entry, was observed for patients with IgD myeloma compared with IgG/IgA (20% vs 14%, respectively; $P < .001$).

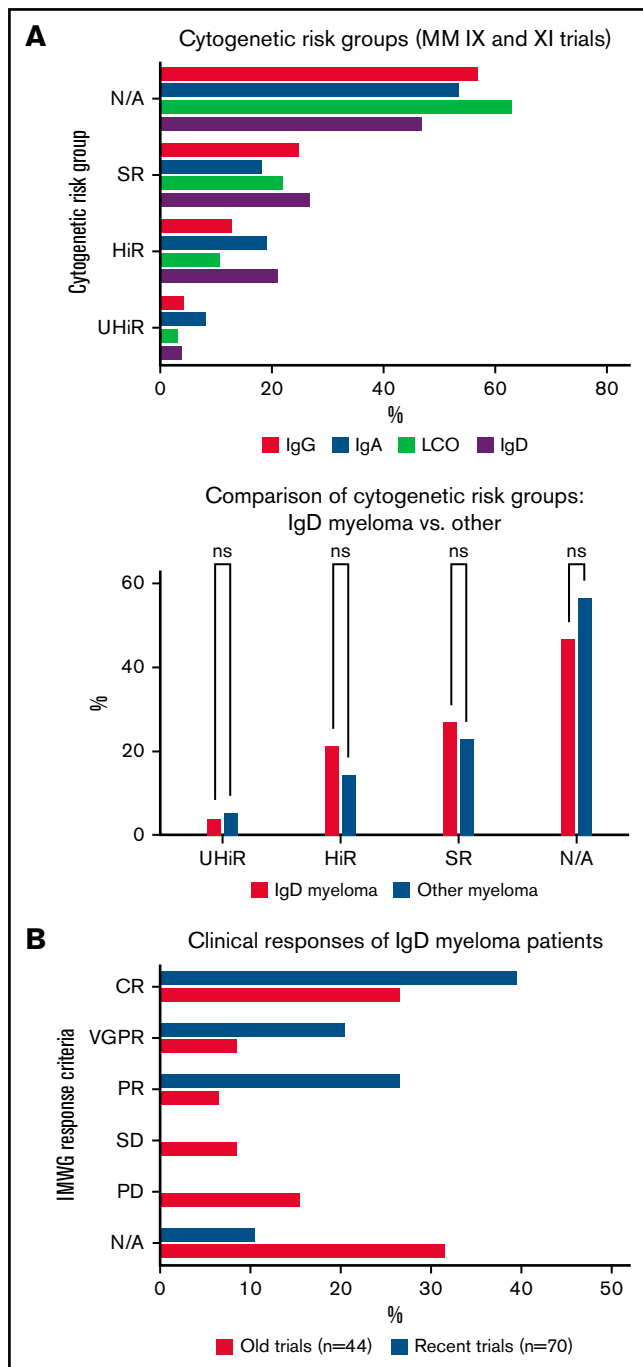


Figure 2. Frequency of cytogenetic risk groups and clinical responses for IgD myeloma. (Ai) Cytogenetic risk stratification of participants in the recent UK myeloma clinical trials (Myeloma IX and XI). Graph shows the percentage of the cytogenetic risk groups for the various myeloma subtypes. (Aii) Comparison proportions of the cytogenetic risk groups for IgD myeloma vs other myeloma subtypes. UHiR, ultra high risk; HiR, high risk; SR, standard risk; N/A, not available. (B) Clinical responses following induction therapy based on the IMWG response criteria. CR, complete response; VGPR, very good partial response; PR, partial response; SD, stable disease; PD, persistent disease; N/A, not available.

In the pooled analysis of the recent trials, the median OS for IgD myeloma was 48 months (95% CI: 35-67 months) compared with 61 months (95% CI: 59-63 months) for the other subtypes

combined (Figure 4A). This difference was not statistically significant ($P = .466$; hazard ratio [HR], 0.89; 95% CI: 0.66-1.21). There was also no significant difference in median PFS between IgD myeloma and other subtypes; 23 vs 22 months, respectively ($P = .522$; HR, 1.09; 95% CI: 0.84-1.42; Figure 4B). Direct comparison of OS between specific myeloma subtypes showed that IgG and LCO myeloma had the longest median OS (Figure 4C) at 64 (95% CI: 62-67 months) and 62 months (95% CI: 55-70 months), respectively. The median OS for IgA myeloma was 51 months (95% CI, 48-54 months). PFS was similar for all patients, irrespective of paraprotein type (Figure 4D).

To evaluate the influence of cytogenetics on survival, a stratified analysis was performed for the recent trial series. The frequency of standard, high, and ultra high risk cytogenetics groups were similar between IgD and IgG myeloma, but the frequency of ultra-high risk cytogenetics was higher for IgA myeloma compared with IgG (8.4% vs 4.5%, $P < .0001$; supplemental Table 2). The median OS and PFS for IgD myeloma was comparable with those of other subtypes within each of the 3 cytogenetic risk groups (supplemental Figure 3a-b). The median OS values for IgD myeloma subcategories were 57 months (95% CI: 15-not evaluable), 53 months (95% CI: 28-80), and 28 months (95% CI: 17-48), respectively, for standard, high, and ultra-high cytogenetic risk groups (Figure 4E). The median PFS was shortest in the ultra-high-risk group (16 months; 95% CI: 10-26) and longest in the high-risk group (24 months; 95% CI: 12-37; Figure 4F).

Mortality data

At the time of data cutoff, 44 and 43 deaths had been recorded among patients with IgD myeloma in the old and recent trial, respectively (Table 2), with disease progression being the main cause of mortality in both groups. A significantly higher rate of early mortality, within 100 days of trial entry, was observed in the old trials IgD myeloma group (20% vs 4%, $P = .01$). Similar rates of deaths caused by renal failure and cardiorespiratory disease were observed between the 2 groups. Interestingly, infection was more commonly recorded as the cause of death in the recent trial series (2% vs 19%, $P = .01$).

Discussion

Given the rarity of IgD myeloma, there are only few published studies on the clinical characteristics and outcomes of the disease. This study reports the largest set of patients with IgD myeloma from randomized clinical trials. Most previously published IgD myeloma studies have been retrospective case series, registry data, or single-center reports, and some of these are summarized in Table 3. One of the strengths of this study is the fact that the diagnostic and follow-up laboratory samples were analyzed in a central laboratory, thus permitting direct comparability between the patient groups in our study.

Previous studies have reported associations of IgD myeloma with male sex, younger age at diagnosis, hypercalcaemia, higher serum β_2 -microglobulin and creatinine, λ light chain predilection, amyloidosis, and a greater degree of bone involvement.²¹⁻²⁴ Some associations such as higher frequency of male patients, younger median age, and λ light chain predilection were also observed in this study. However, despite being an older group, patients with IgD myeloma in the recent trials had less renal impairment and hypercalcemia, better performance status, and earlier ISS stage at diagnosis

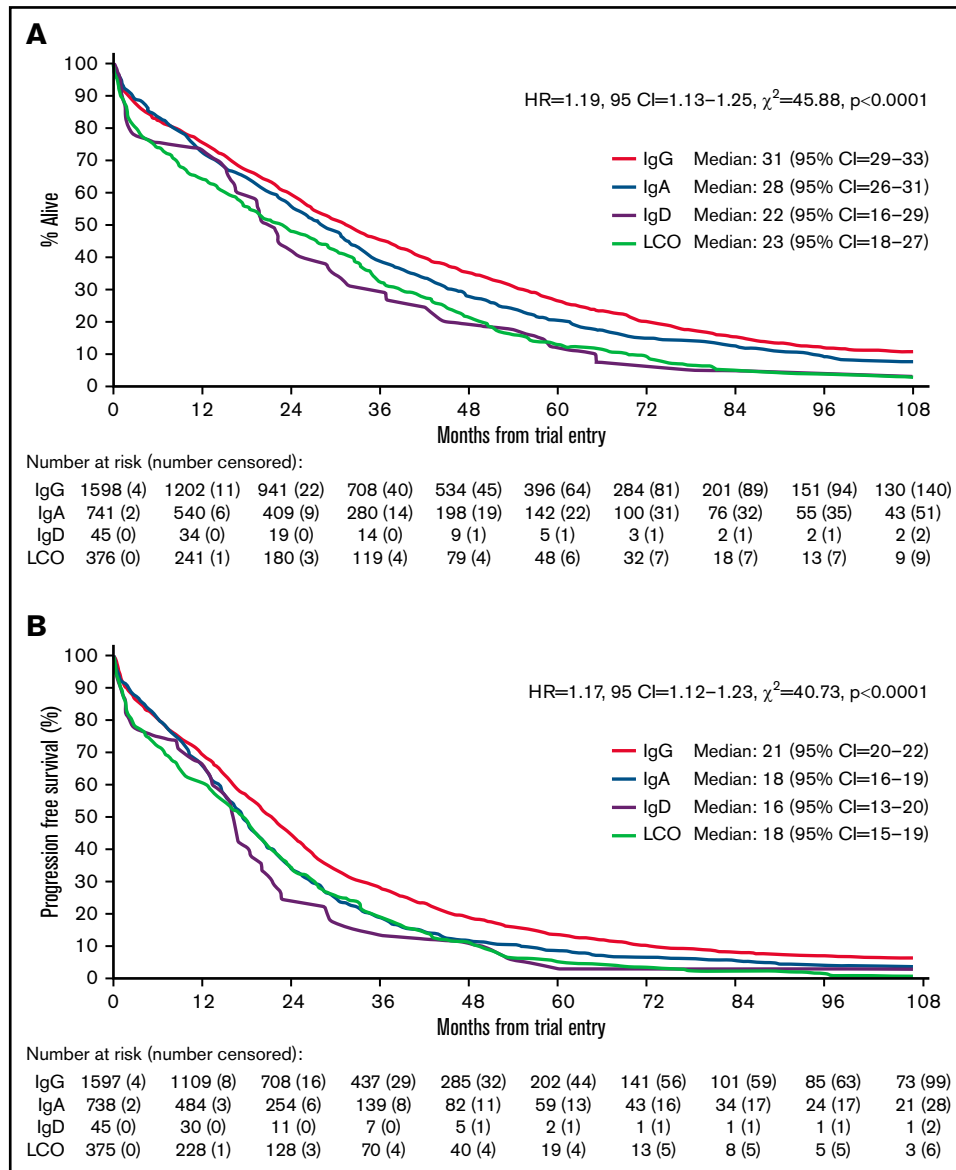


Figure 3. Old myeloma trials. (A) Overall survival of patients with myeloma stratified by paraprotein type. (B) Progression-free survival of patients with myeloma stratified by paraprotein type.

compared with the old trials group. The most plausible explanation for this observation would be earlier diagnosis permitted by the introduction of sensitive diagnostic techniques such as the serum free light chain assay. Interestingly, we also found striking similarities in baseline characteristics between IgD and LCO myeloma, possibly reflecting the diagnostic challenge posed by the lack of a characteristic monoclonal protein spike on conventional electrophoresis for both myeloma subtypes. Possibly because of the difficulty with establishing the diagnosis of IgD myeloma before the introduction of more sensitive diagnostic methods such as the serum-free light chain assay, patients were at an advanced stage with a higher disease burden as observed in the old trials. Consequently, the lesser degree of severe renal impairment observed in the recent trials compared with the older trials may also reflect the improved management of renal complications. The most striking evidence for this can

be seen in the marked improvement in the median overall survival of LCO myeloma between the 2 series (23 vs 62 months). A recently published analysis of outcomes of patients from the Myeloma XI trial by baseline renal function showed that severe renal impairment was associated with inferior survival and recovery of renal function post-induction treatment was associated with younger age (<70 years), a higher baseline free light chain level > 1000 mg/L, and/or a free light chain response of >90%.¹⁷ Therefore, the improved renal profiles of the recent trials group would have made a significant contribution to the improvements in survival outcomes of patients with IgD myeloma.

Despite the patients with IgD in the old trial series being younger, this group had a worse baseline performance status and ISS stage, correlating with inferior survival outcomes for this group.

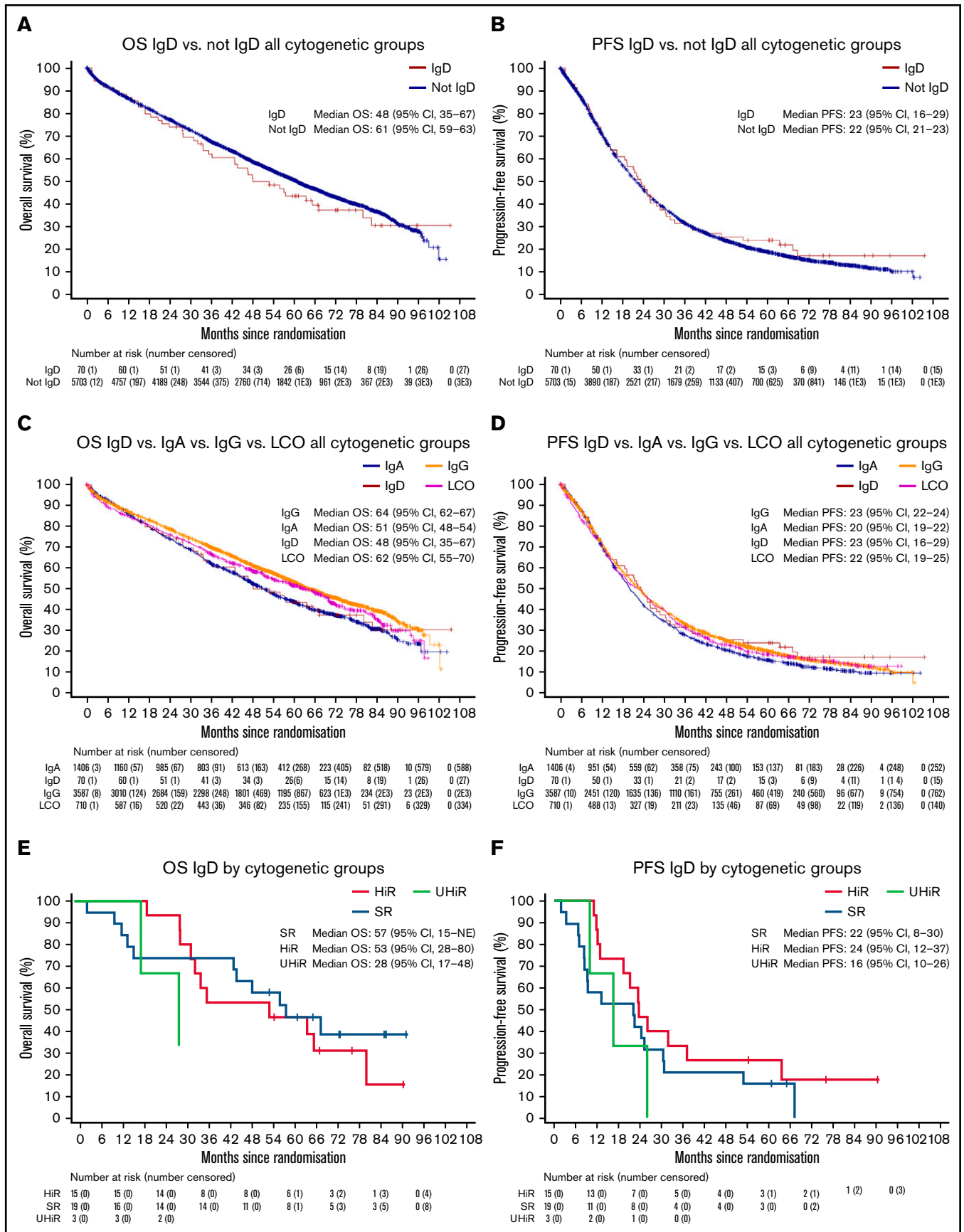


Figure 4.

Comparison of OS for IgD myeloma across the trials indicates a significant improvement in median survival from 22 months (95% CI: 16-29 months) for the old trials series to 48 months (95% CI: 35-67 months) in the recent trials. A similar improvement in progression-free survival was observed (16 months; 95% CI: 13-20 vs 23 months, 95% CI: 16-29). As the recent trials were conducted in the era of IMiDs and proteasome inhibitors, it is likely that the improvement in outcomes, particularly the PFS, is attributable to these novel therapies. Interestingly, of all the myeloma subtypes, IgD myeloma has seen the largest improvement in PFS between the 2 series. A similar improvement in IgD myeloma survival has been reported by the Greek Myeloma Study Group for patients treated from 2000 to 2012 compared with those treated before 2000 (44 vs 51.5 months, $P = .018$), the time point when the first IMiD became available.⁹ Furthermore, a consistent improvement in median OS is apparent from published IgD myeloma studies over the years (Table 3). One of the earliest case series of IgD myeloma in Japanese patients published in 1991,²⁵ well before the introduction of novel antimyeloma agents, reported a median OS of 12 months in contrast to a recently published multicentre retrospective Asian Myeloma Network (AMN) study involving patients with IgD myeloma from China, Korea, and Singapore that reported a median OS of 36.5 months for the entire IgD myeloma cohort.²⁶ There was an unusually high prevalence of IgD myeloma (2%-8.8%) in the study population with a higher frequency of t11,14 chromosomal rearrangement in the IgD myeloma cohort compared with other myeloma subtypes (24.7% of IgD MM vs 13.5% of non-IgD MM). Similarly in our recent trials series, the frequency of t11,14 in IgD myeloma was approximately twice that of the IgG subtype. This increased frequency of t11,14 in IgD myeloma warrants further study because of the therapeutic potential of BCL-2 inhibitors in this group of patients.

Furthermore, IgD myeloma was not associated with a higher rate of adverse cytogenetics compared with other subtypes; however, we observed an increased frequency of the ultra-high risk cytogenetic profile in IgA myeloma, correlating with a relatively shorter OS compared with IgG myeloma (Figure 4C). Other studies have similarly reported higher frequencies of adverse risk cytogenetics such as t4,14 in patients with IgA myeloma with resulting poorer outcomes compared with IgG myeloma.²⁷⁻²⁹ Furthermore, the significant difference in median OS between IgG and IgA myeloma in our study is not seen within the ultra-high risk cytogenetics subgroup that has a uniformly inferior outcome (IgA, 33 months, 95% CI: 26-40 vs IgG, 29 months, 95% CI: 22-36; supplemental Figure 4). These observations support the use of cytogenetic risk stratification rather than paraprotein type in assigning prognostic categories in myeloma.

The impact of novel therapies on the outcomes of IgD myeloma could also be deduced from the clinical response rates between the old and recent trial series as the overall response rate was significantly higher in the recent trials (89% vs 43%, $P < .0001$) with a trend toward deeper remissions (CR and VGPR). In a study conducted in the prenovel therapy era, Morris et al previously reported

Table 2. Causes of IgD myeloma deaths in MRC/UKRI myeloma clinical trials

IgD myeloma deaths	Old trials (n = 44), n (%)	Recent trials (n = 70), n (%)	P
All deaths	44 (100)	43 (61)	
Progressive disease	21 (48)	21 (49)	0.99
Infection	1 (2)	8 (19)	0.01
Renal failure	3 (7)	4 (9)	0.7
Cardiac/respiratory disease	5 (11)	3 (7)	0.7
Malignancy other than myeloma	1 (2)	1 (2)	0.99
Other causes	13 (29)	6 (14)	0.12
Early mortality (all causes within 100 d of trial entry)	9 (20)	3 (4)	0.01

significantly higher complete response rate in patients with IgD myeloma compared with the more common myelomas (43.8% vs 23.2%) but an inferior OS (43.5 vs 63.2 months, $P < .0001$) suggesting a high relapse rate in this patient group.²² Similar findings were reported in a smaller study of 77 patients with myeloma undergoing autologous stem cell transplant in Korea; despite significantly higher complete response rates after autologous stem cell transplant (75% vs 58%), patients with IgD myeloma had much worse event-free (6.9 vs 11.5 months, $P = .01$) and OS (12 vs 55.5 months, $P < .01$) compared with other myeloma subtypes.³⁰ It is noteworthy that the majority of patients in this study received conventional chemotherapy regimens as opposed to novel agents. Given the improvements in IgD PFS in our recent trial series, it is possible to conclude that novel agents have improved both the depth and duration of clinical responses in patients with IgD myeloma.

In the current study, the most frequent cause of death for both IgD myeloma series was disease progression, with a significantly higher rate of early mortality in the old trials, which is likely because of a combination of factors notably severe renal impairment and advanced disease stage. An explanation for the higher rate of infections reported as a cause of death in the recent trials series is likely a result of longer survival and the impact of multiple lines of therapy.

One of the limitations of this study has been the relatively limited number of patients with IgD myeloma that made comparison with the other more common myeloma subtypes statistically challenging. Furthermore, cytogenetics results were not available for the old trials for comparison with the available data from the recent trials. The exclusion of patients with end-stage renal impairment from the clinical trials limits the extrapolation of the findings to this population, but as the comparison of outcomes was between 2 clinical trial series with similar inclusion and exclusion criteria, apart from the age limit of 75 years for the older trials, the observed differences in outcomes are not likely to be attributable to selection bias. Furthermore, the central analysis of the OPTIMAL and MERIT trials of patients with newly diagnosed myeloma in the United Kingdom

Figure 4 (continued) Recent myeloma trials. (A) Kaplan-Meier plot comparing overall survival between IgD myeloma and other subtypes. (B) Kaplan-Meier plot comparing progression-free survival between IgD myeloma and other subtypes. (C) Kaplan-Meier plot of overall survival stratified by paraprotein class. (D) Kaplan-Meier plot of progression-free survival stratified by paraprotein class. (E) Overall survival of patients with IgD myeloma stratified by cytogenetic risk group. (F) Progression-free survival of patients with IgD myeloma stratified by cytogenetic risk group.

Table 3. Comparison of clinical characteristics and median OS of patients with IgD myeloma between major published studies

Study	Study population	Median age (y)	Male (%)	Hb < 100 g/L (%)	Serum creatinine > 2 mg/dL (%)	Extramedullary involvement (%)	Δ light chain association (%)	Median OS (mo)
Jancelewicz et al 1975	Retrospective review of IgD myeloma cases (n = 133)	56	76	61	31	73	90	9
Shimamoto et al 1991	Retrospective study of Japanese patients with IgD myeloma (n = 165)	56	76	50 (Hb < 85 g/L)	43	27	82	12
Blade et al 1994	Single US center report of IgD myeloma cases diagnosed 1965-1992 (n = 53)	60	62	29	33	19	60	21
Morris et al 2010	Retrospective study of IgD myeloma cases in the EBMT myeloma database for patients undergoing autologous stem cell transplants 1986-2007 (n = 379)	54	65	~50	Median 130 mmol/L (1.47 mg/dL)	–	75	43.5
Kim et al 2011	Korean myeloma registry database 1997-2009 (n = 77)	57	67	75	53	11	89	18.5
Zagouri et al 2013	Cohort study by the Greek Myeloma Study group 2000-2012 (n = 31)	65	52	58	52	–	84	51.5
Liu et al 2020	Asian Myeloma Network (China, Korea, and Singapore) multicentre cohort study 2012-2019 (n = 356)	56	68	65	36	19	89	36.5

EBMT, European Society for Blood and Bone Marrow Transplantation; Hb, hemoglobin.

presenting with severe renal impairment reported comparable proportions of IgD myeloma, indicating that significant patients with IgD myeloma were not being missed by exclusion of patients with end-stage renal failure from the clinical trials analyzed in this publication.³¹

To our knowledge, this is the first study specifically reporting the characteristics and outcomes of IgD myeloma from large phase 3 randomized clinical trials. Our data suggest that with improved diagnostic tests permitting earlier diagnosis and the introduction of novel antimyeloma agents, OS and PFS of IgD myeloma is now comparable to other myeloma subtypes. We argue that the historical association of IgD myeloma with a dismal prognosis was largely because of renal impairment and advanced stage, possibly linked to delays in establishing the diagnosis. Our data also underline the importance of cytogenetic risk stratification as patients with adverse cytogenetic profiles had poorer outcomes irrespective of the myeloma subtype and that IgD myeloma was not associated with a higher rate of adverse cytogenetics. Therefore, in the era of novel myeloma therapies, cytogenetic risk stratification is of greater prognostic value than paraprotein type.

Acknowledgments

The authors appreciate all the clinical trial investigators across the participating hospitals in the United Kingdom and particularly the trial participants.

Authorship

Contribution: C.A. prepared the original draft, created methodology, and performed data curation and analysis; G.I. reviewed and edited the manuscript, and performed data curation for the old trials series, analysis, and validation; D.C. performed data curation for the recent trials and reviewed and edited the manuscript; T.M. reviewed and

edited the manuscript and performed data curation, analysis, and validation of the recent trials; J.D., W.G., M.K., R.O., C.P., J.A.C., F.D., G.J.M., and G.H.J. reviewed and edited the manuscript; and M.T.D. and S.B. supervised the study, participated in conceptualization, created methodology, performed data validation, and reviewed and edited the manuscript.

Conflict-of-interest disclosure: D.C., T.M., and W.G. received research funding from Celgene Corporation, Amgen, Merck Sharp, and Dohme. M.K. has consulted for Abbvie, consulted for and received honoraria from Amgen, consulted for and received honoraria, research support, and travel support from BMS/Celgene, consulted for and received honoraria and travel support from Janssen, consulted for GSK, consulted for Karyopharm, consulted for Pfizer, consulted for Seattle Genetics, and consulted for and received honoraria and travel support from Takeda. C.P. received consulting fees, honoraria, and travel support from Amgen, Celgene Corporation, Janssen, Sanofi, and Takeda Oncology. G.J.M. received consultancy fees, honoraria, and travel support from Amgen, Celgene Corporation, Janssen, Sanofi, and Takeda Oncology. G.H.J. received research funding from Takeda and Celgene/BMS and honoraria for speaking from Takeda, Celgene/BMS, Amgen, Janssen, Sanofi, and Oncopeptides. M.T.D. owns stock in Abbingdon Health. S.B. is on the ad board for Sanofi, Pfizer, and Bristol Myers Squibb. The remaining authors declare no competing financial interests.

ORCID profiles: C.A., 0000-0002-4783-9853; G.I., 0000-0002-1391-6021; D.C., 0000-0002-2338-0179; T.M., 0000-0003-3896-7228; M.K., 0000-0002-3677-4804; C.P., 0000-0002-7190-0028.

Correspondence: Charles Agbuduwe, UCL Cancer Institute, 72 Huntley St, London, WC1E 6DD and UCL Great Ormond Street Institute of Child Health, University College London, London, United Kingdom; e-mail: c.agbuduwe@ucl.ac.uk.

References

1. Rajkumar SV, Dimopoulos MA, Palumbo A, et al. International Myeloma Working Group updated criteria for the diagnosis of multiple myeloma. *Lancet Oncol*. 2014;15(12):e538-e548.
2. van de Donk NW CJ, Pawlyn C, Yong KL. Seminar multiple myeloma. *Lancet*. 2021;397(10272):410-427
3. Morris C, Iacobelli S, Gahrton G, et al. Efficacy and outcome of allogeneic transplantation in IgD and nonsecretory myeloma. A report on behalf of the Myeloma Subcommittee of the Chronic Malignancies Working Party of the European Group for Blood and Marrow Transplantation. *Biol Blood Marrow Transplant*. 2015;21(6):1054-1058.
4. Wechalekar A, Amato D, Chen C, Keith Stewart A, Reece D. IgD multiple myeloma: a clinical profile and outcome with chemotherapy and autologous stem cell transplantation. *Ann Hematol*. 2005;84(2):115-117.
5. Djidjik R, Lounici Y, Chergeulaine K, et al. IgD multiple myeloma: clinical, biological features and prognostic value of the serum free light chain assay. *Pathol Biol (Paris)*. 2015;63(4-5):210-214.
6. Hobbs JR, Corbett AA. Younger Age of Presentation and Extraosseous Tumour in IgD Myelomatosis. *Br Med J*. 1969;1(5641):412-414.
7. Drayson M, Tang LX, Drew R, Mead GP, Carr-Smith H, Bradwell AR. Serum free light-chain measurements for identifying and monitoring patients with nonsecretory multiple myeloma. *Blood*. 2001;97(9):2900-2902.
8. Djidjik R, Lounici Y, Chergeulaine K, et al. IgD multiple myeloma: clinical, biological features and prognostic value of the serum free light chain assay. *Pathol Biol (Paris)*. 2015;63(4-5):210-214.
9. Zagouri F, Kastiris E, Symeonidis AS, et al; Greek Myeloma Study Group. Immunoglobulin D myeloma: clinical features and outcome in the era of novel agents. *Eur J Haematol*. 2014;92(4):308-312.
10. Chen L, Fan F, Deng J, et al. Clinical characteristics and prognosis of immunoglobulin D myeloma in the novel agent era. *Ann Hematol*. 2019;98(4):963-970.
11. Kumar SK, Rajkumar SV, Dispenzieri A, et al. Improved survival in multiple myeloma and the impact of novel therapies. *Blood*. 2008;111(5):2516-2520.
12. Drayson M, Begum G, Basu S, et al. Effects of paraprotein heavy and light chain types and free light chain load on survival in myeloma: an analysis of patients receiving conventional-dose chemotherapy in Medical Research Council UK multiple myeloma trials. *Blood*. 2006;108(6):2013-2019.
13. Augustson BM, Begum G, Dunn JA, et al. Early mortality after diagnosis of multiple myeloma: analysis of patients entered onto the United Kingdom Medical Research Council trials between 1980 and 2002: Medical Research Council Adult Leukaemia Working Party. *J Clin Oncol*. 2005;23(36):9219-9226.
14. Morgan GJ, Davies FE, Gregory WM, et al; National Cancer Research Institute Haematological Oncology Clinical Studies Group. Cyclophosphamide, thalidomide, and dexamethasone as induction therapy for newly diagnosed multiple myeloma patients destined for autologous stem-cell transplantation: MRC Myeloma IX randomized trial results. *Haematologica*. 2012;97(3):442-450.
15. Morgan GJ, Davies FE, Gregory WM, et al; NCRI Haematological Oncology Study Group. Cyclophosphamide, thalidomide, and dexamethasone (CTD) as initial therapy for patients with multiple myeloma unsuitable for autologous transplantation. *Blood*. 2011;118(5):1231-1238.
16. Jackson GH, Davies FE, Pawlyn C, et al; UK NCRI Haemato-oncology Clinical Studies Group. Lenalidomide maintenance versus observation for patients with newly diagnosed multiple myeloma (Myeloma XI): a multicentre, open-label, randomised, phase 3 trial. *Lancet Oncol*. 2019;20(1):57-73.
17. Rana R, Cockwell P, Drayson M, et al. Renal outcome in patients with newly diagnosed multiple myeloma: results from the UK NCRI Myeloma XI trial. *Blood Adv*. 2020;4(22):5836-5845.
18. Boyd KD, Ross FM, Chiecchio L, et al; NCRI Haematology Oncology Studies Group. A novel prognostic model in myeloma based on co-segregating adverse FISH lesions and the ISS: analysis of patients treated in the MRC Myeloma IX trial. *Leukemia*. 2012;26(2):349-355.
19. Palumbo A, Avet-Loiseau H, Oliva S, et al. Revised international staging system for multiple myeloma: a report from international myeloma working group. *J Clin Oncol*. 2015;33(26):2863-2869.
20. Shah V, Sherborne AL, Walker BA, et al. Prediction of outcome in newly diagnosed myeloma: a meta-analysis of the molecular profiles of 1905 trial patients. *Leukemia*. 2018;32(1):102-110.
21. Jancelewicz Z, Takatsuki K, Sugai S, Pruzanski W, Rowe DSFJ. IgD multiple myeloma. Review of 133 cases. *Arch Intern Med*. 1975;135(1):87-93.
22. Morris C, Drake M, Apperley J, et al; Myeloma Subcommittee of Chronic Leukaemia Working Party of EBMT. Efficacy and outcome of autologous transplantation in rare myelomas. *Haematologica*. 2010;95(12):2126-2133.
23. Bladé J, Lust JA, Kyle RA. Immunoglobulin D multiple myeloma: presenting features, response to therapy, and survival in a series of 53 cases. *J Clin Oncol*. 1994;12(11):2398-2404.
24. Kim MK, Suh C, Lee DH, et al. Immunoglobulin D multiple myeloma: response to therapy, survival, and prognostic factors in 75 patients. *Ann Oncol*. 2010.
25. Shimamoto Y, Anami Y, Yamaguchi M. A new risk grouping for IgD myeloma based on analysis of 165 Japanese patients. *Eur J Haematol*. 1991;47(4):262-267.
26. Liu J, Hu X, Jia Y, et al. Clinical features and survival outcomes in IgD myeloma: a study by Asia Myeloma Network (AMN). *Leukemia*. 2001;35:1797-1802.

27. Yadav P, Merz M, Mai EK, et al. Cytogenetic aberrations in multiple myeloma are associated with shifts in serum immunoglobulin isotypes distribution and levels. *Haematologica*. 2018;103(4):e162-e164. <https://doi.org/10.3324/haematol.2017.184226>
28. Usmani SZ, Hoering A, Cavo M, et al. Clinical predictors of long-term survival in newly diagnosed transplant eligible multiple myeloma: an IMWG Research Project. *Blood Cancer J*. 2018;8(12):123.
29. Chang H, Sloan S, Li D, et al. The t(4;14) is associated with poor prognosis in myeloma patients undergoing autologous stem cell transplant. *Br J Haematol*. 2004;125(1):64-68.
30. Kim MK, Suh C, Lee DH, et al; Korean Multiple Myeloma Working Party. Immunoglobulin D multiple myeloma: response to therapy, survival, and prognostic factors in 75 patients. *Ann Oncol*. 2011;22(2):411-416.
31. Drayson M, Behrens J, Cohen D, et al. A351 serum FLC levels can be reduced rapidly; lower levels are associated with renal recovery. *Clin Lymphoma Myeloma*. 2009;9:S57-S58.