

Fig. 5.3: Silver ions released from silver-exchanged Laponite[®] RD and AgNO₃ into TSB with *E. coli* (i), (ii); *S. aureus* (iii), (iv) and *P. aeruginosa* (v), (vi) with time at concentrations of 2g l⁻¹ each of AGLAP1, AGLAP4 and AGLAP6 at 37°C.

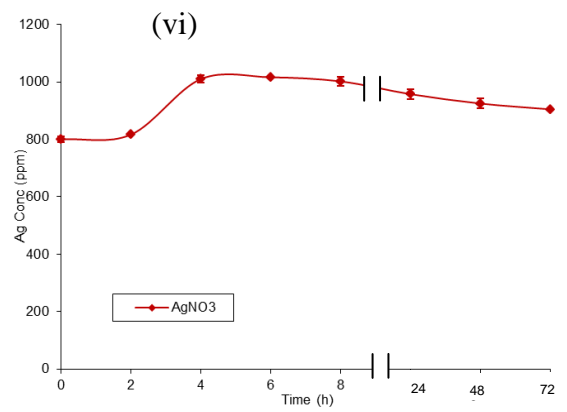
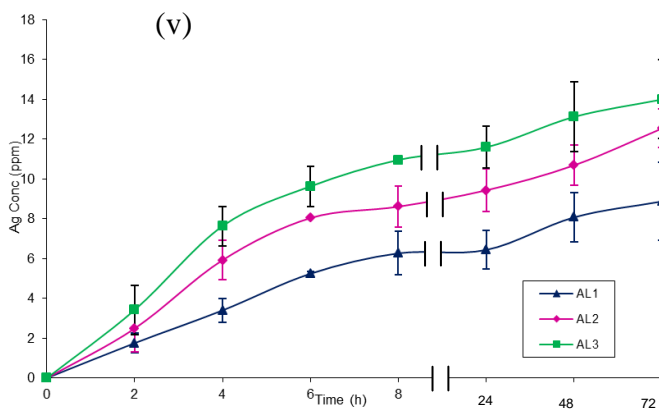
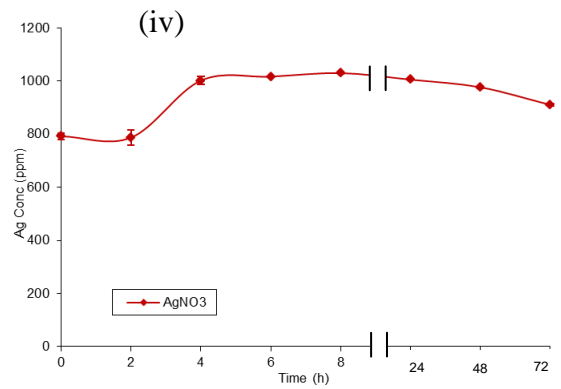
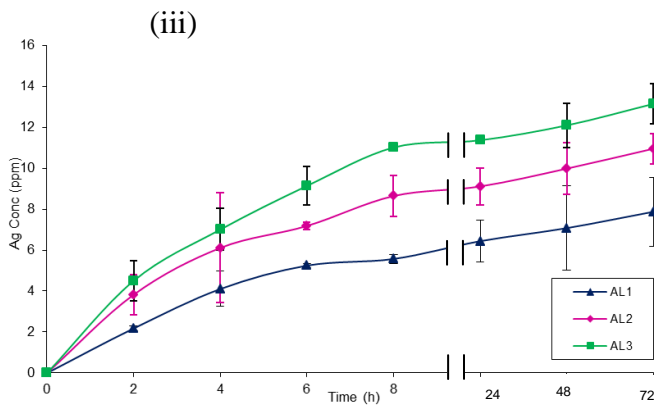
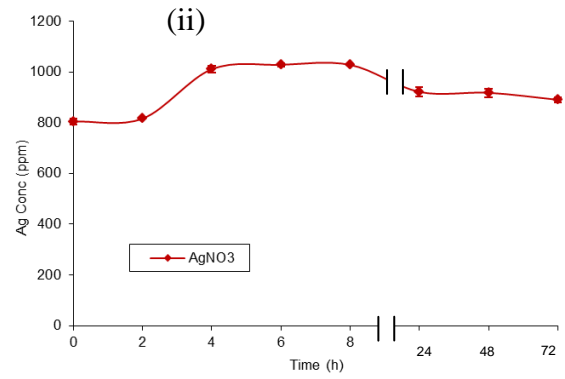
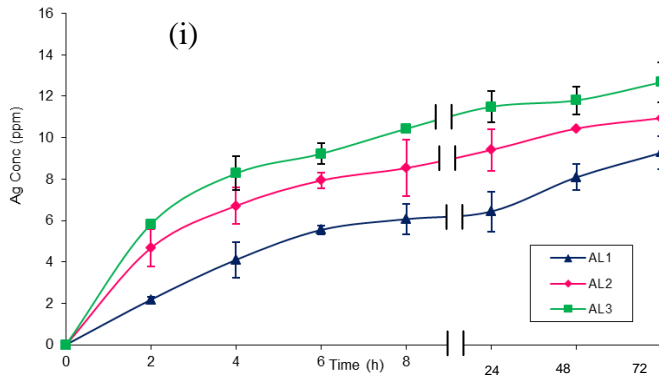


Fig. 7: Silver ion released from silver incorporated Laponite[®] RD and AgNO₃ into TSB with *E. coli* (i), (ii); *S. aureus* (iii), (iv) and *P. aeruginosa* (v), (vi) with time. The bacteria were treated with 2g l⁻¹ each of AL1, AL2, AL3 and AgNO₃ at 37°C between the pH ranges 6.2 – 7.1.

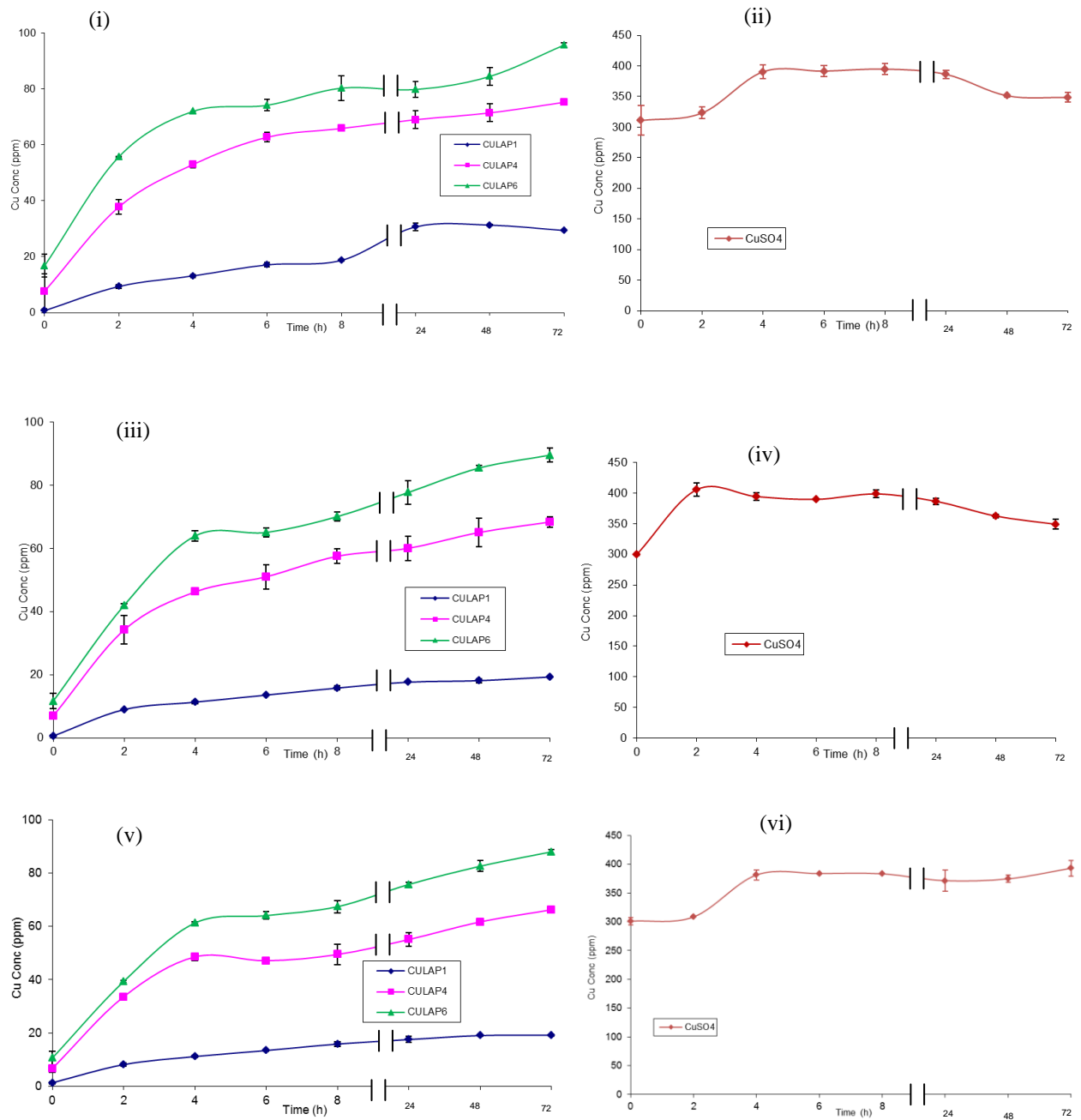


Fig. 6.3: Copper ion released from copper-exchanged Laponite[®] RD and CuSO₄ into TSB with *E. coli* (i), (ii); *S. aureus* (iii), (iv) and *P. aeruginosa* (v), (vi) with time at concentrations of 2g l⁻¹ each of CULAP1, CULAP4 and CULAP6 at 37°C.

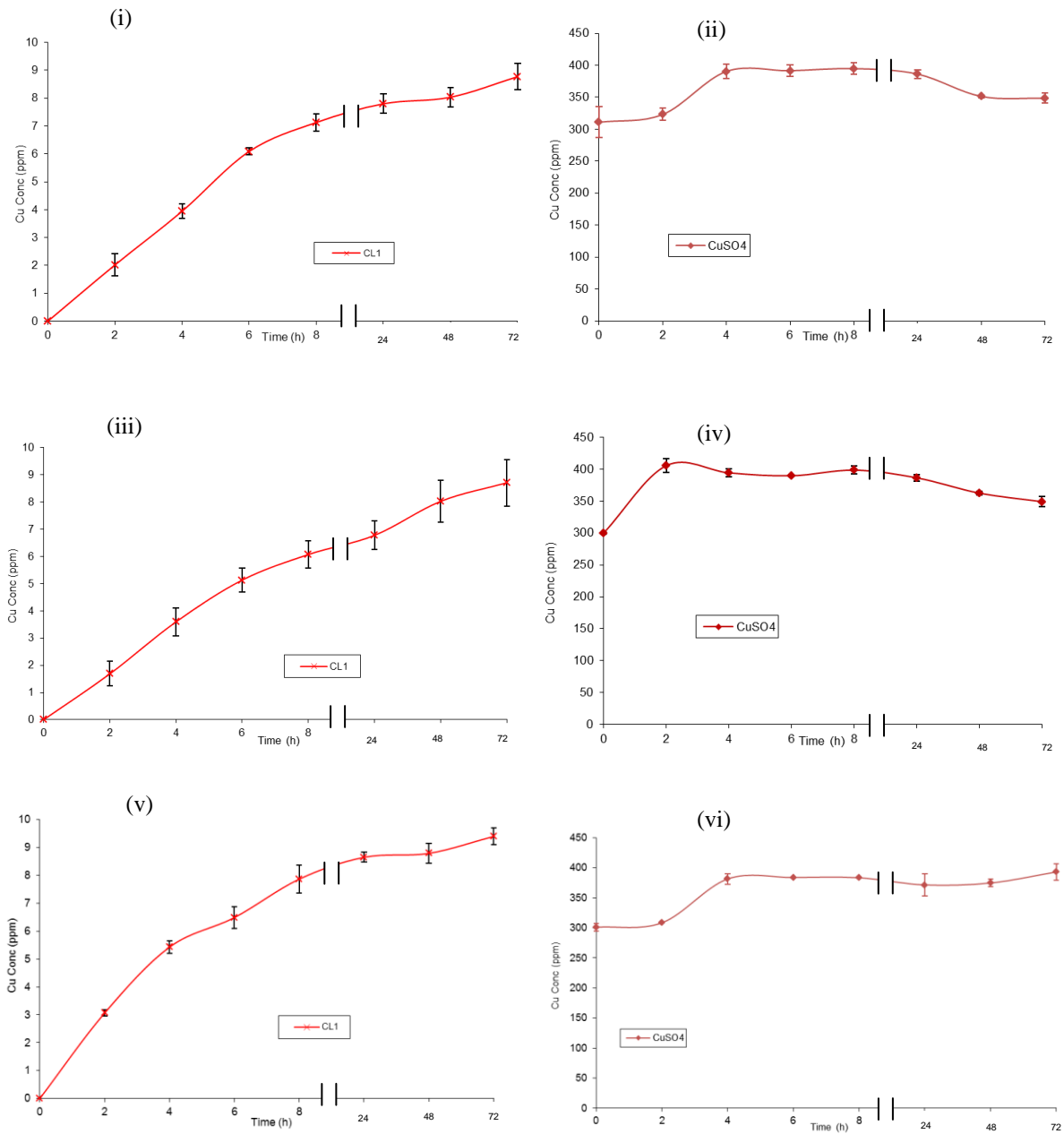


Fig. 6.6: Copper ion released from copper incorporated Laponite[®] RD and CuSO₄ into TSB with *E. coli* (i), (ii); *S. aureus* (iii), (iv) and *P. aeruginosa* (v), (vi) with time at concentrations of 2g l⁻¹ of CL1 at 37°C.